



WATER FILTER

Installation and Replacement Instructions

Specifications:

Filter Housing	Temperature Range	Pressure Range	Optional Accessories
3/4-inch I/O	40-125°F (4.4-51.7°C)	30-125 psi (2.1-8.62 bar) Spanner Wrench (150295)	Mounting Bracket (151011)

TOOLS REQUIRED:

Screwdriver, File, Pipe Cutter or Hacksaw, 2 Adjustable Wrenches and a Pencil.

MATERIALS REQUIRED:

Depends on type, size, and location of pipe on which system will be installed. See instructions that relate to your particular installation, or consult your local hardware store or plumbing supplier to find out more about your particular installation needs.

PRECAUTIONS:

Warning: Do not use with water that is microbiologically unsafe or of unknown quality without adequate disinfection before or after the system.

Caution: Filter must be protected against freezing, which can cause cracking of the filter and water leakage.

Caution: The rubber o-ring provides the water-tight seal between the cap and the bottom of the housing. It is important that the o-ring be properly seated in the groove below the threads of the housing, or a water leak could occur.

Caution: To prevent costly repairs or possible water damage the sump of plastic housings must be replaced every five years for clear, and ten years for opaque. If sump is older than recommended, replace immediately. Date sump for reference and indicate replacement date.

- Install on cold water line only.
- Do not install where system will be exposed to direct sunlight.
- Make certain that installation complies with all state and local laws and regulations.

WHOLE HOUSE INSTALLATION

(1/2 inch or 3/4-inch main cold water line)

MATERIALS REQUIRED:

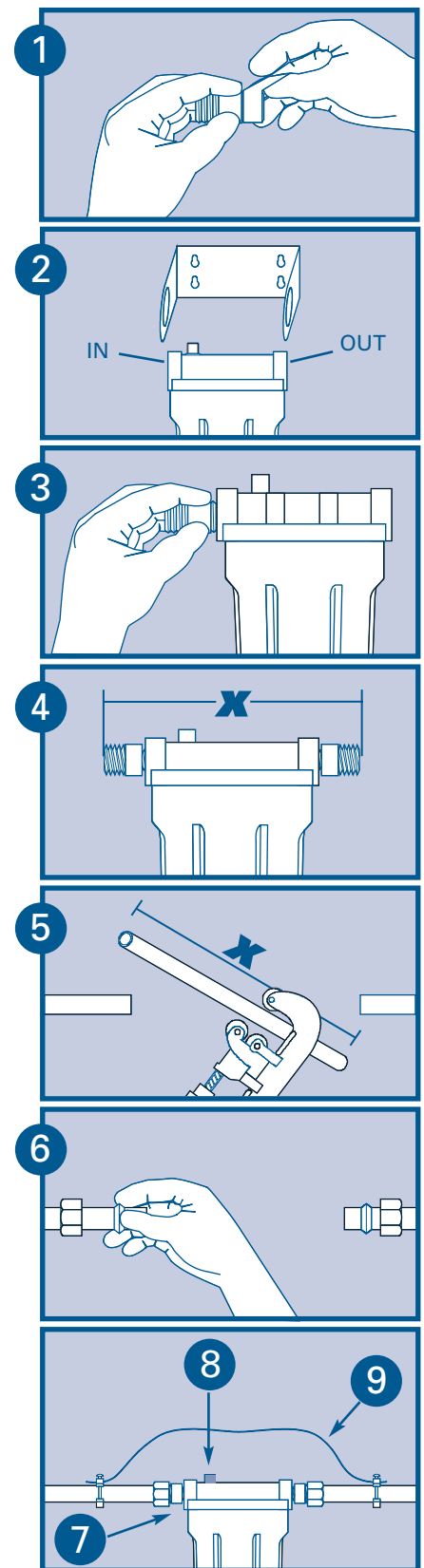
(2) 3/4-inch or 1/2-inch NPT compression fittings, Teflon® tape and Reducing adapters (if necessary)

Note:

- Reducing adapters can be used to adapt the filter to different pipe sizes. See your local hardware store or plumbing store for help in selecting the necessary adapters and compression fittings for your installation needs.
- Galvanized fittings must be used with installation on galvanized pipe.
- Filter must be installed after water meter or pressure tank.

continued on back >>

- 1 Turn off cold water supply and open nearest faucet to drain pipes before starting installation. Wrap about 6 inches of Teflon® tape in clockwise direction around pipe threads of each compression fitting.
- 2 If mounting bracket (not supplied) is to be used, first use bracket as a template to mark screw locations. Then place bracket over cap and align with inlet and outlet ports. Allow 1-1/2 inch clearance below housing to enable cartridge changes.
Note: Mounting bracket for heavy-duty filter does not fit over inlet/outlet connections. Heavy-duty bracket should be screwed directly into cap or filter.
- 3 Start compression fittings into cap by hand and use a wrench to tighten firmly. **DO NOT OVER-TIGHTEN.** About one thread should remain visible. Remove compression nuts from fittings.
- 4 Measure length (shown as X on Figure 4) across assembled fittings and subtract 1 inch if you are installing on 3/4-inch pipe or 1-1/2 inches if you are installing on 1/2-inch pipe. Mark section of pipe to be removed.
- 5 Use a pipe cutter or hacksaw, cut pipe and remove marked section of pipe. File or sand sharp edges on remaining pipe.
- 6 Slip compression nut and ferrule onto each end of pipe.
- 7 Align filter assembly with ends of pipe, making certain cap opening marked "IN" is facing your incoming water supply. It will be necessary to spread ends of pipe apart to install filter assembly. Using two adjustable wrenches, hold incoming adapter securely with one wrench and tighten nut with second wrench. Repeat process for outgoing adapter.
- 8 Slowly turn on the water supply to allow filter to fill with water, then press the red pressure-relief button on top of filter to release trapped air. Open nearest faucet and flush water through cartridge for 5 minutes. Check for leaks before leaving installation.
- 9 **Caution:** If water pipes are used to ground electrical systems, appliances, or phones, be certain to install a jumper wire. Contact a qualified electrician with any questions about your home's electrical system.



CARTRIDGE REPLACEMENT

- A. Turn off water supply to filter. Depress red pressure-relief button to relieve the pressure, then twist off bottom of housing.
Note: If turning off water supply to filter will also turn off water supply to the rest of the home, be sure to fill a bucket of water first to allow you to clean housing after it has been removed.
- B. Locate and remove large o-ring, wipe clean of lubricant, and set aside.
Discard used cartridge. Rinse out bottom of housing and fill about 1/3 full with water. Add about 1 tablespoon of bleach and scrub cap and bottom of housing with nonabrasive sponge or cloth. Rinse thoroughly.
Lubricate o-ring with clean silicone grease. Clean groove and connection point on cap. Insert o-ring back into groove and smooth into place with finger. Insert new cartridge over standpipe in bottom of housing.
- C. Screw bottom of housing onto the cap and hand-tighten. **DO NOT OVER-TIGHTEN.** Make certain cap standpipe slips into cartridge.
Slowly turn on the water supply to allow filter to fill with water and then press the red pressure-relief button on top of the filter to release trapped air. Open faucet and flush filter with water for 5-minutes. Check for leaks before leaving installation.